



GEOGRAPHERS' NEWS LETTER

Association of Punjab Geographers

(Registered under Societies Registration Act XXI of 1860 No. 1902 of 1998-99)

Vol. 15 No. 2

July 2013

Editor : Principal Shubhprem Singh Brar

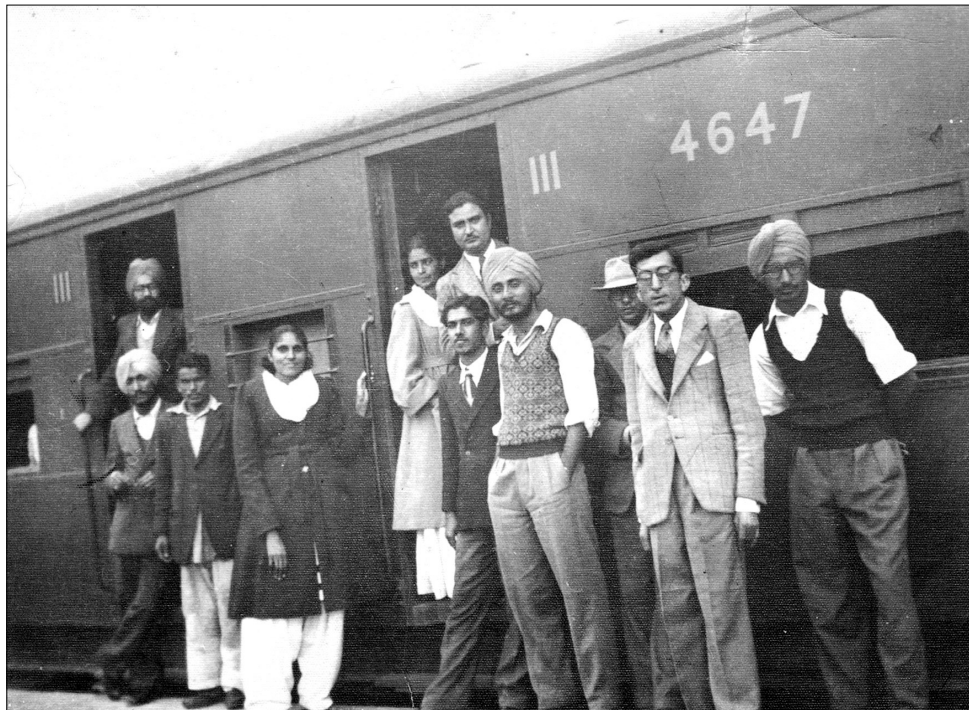
Co-Editor : Dr. Jaspal Singh

TRIBUTE TO

PROFESSOR INDER NATH CHAWLA

BY HIS CLASSMATE HAVING STRONG AND LONG ASSOCIATION: SINCE 1952, OVER SIXTY YEARS
UNFORGETTABLE MEMORY

Compartment Number 4647 of Punjab Mail at Sanchi Stupas Railway Station on way to Agra, December, 1952



From right standing in first gate – Professor Om Parkash Bhardwaj and Second gate Joginder Singh Kaliana
From right standing in row – First Jai Parkash Singh, Fourth Jasbir Singh and Fifth well-dressed Chawla

In my own humble way, tried to return with heavy heart as little myself could do in this modest tribute (*sharadhanjali*) to beloved and caring friend Chawla.

One should not give an impression of **egoism**, a tendency to selfishness. On the contrary, one should have **altruism personality**, meaning enlightened, unselfishness, and ordinariness, a person concerned with the welfare of others having belief in humanism (*insaniyat*). **This trait was in Inder Nath Chawla.** One stays in egoistic world as a temporary guest like a bubble in water pond, and comes alone with empty hands, completes journey as temporary passenger (*musafir*), and leaves alone empty-handed after sincerely performing duties in society and family facing adversities, miseries and happiness in wordy-world. **Chawla was that type of personality.**

Essentially, it is necessary to mention that Kaliana and Chawla were room mates for two years in hostel at

Government College, Ludhiana. Jai Parkash Singh and myself were day scholars. **So, strong and long was association.**

It is worth to mention a few commons:

- Chawla and myself were Pakistan (Punjab) born with rural background. Both of us suffered due to partition of India in 1947. So, we knew more about each other. From childhood through youth to date.
- We four classmates were year 1931 born: Joginder Singh Kaliana 1-1-1931; Jai Parkash Singh 9-4-1931; Jasbir Singh 13-04-1931, and Inder Nath Chawla 23-04-1931.
- Chawla is physically no more with us, but gentleman like scholars and human-beings never die. They remain with us in the form of their academic works, intellectual contributions, romantic and affectionate nature.
- Dr. Jai Parkash Singh and Harwant Singh Mangat were Professor Heads of Geography Department, Punjabi University, Patiala; Professor Joginder Singh Kaliana was Principal of Dyal Singh College, Karnal and Professor Inder Nath Chawla was Head of Post-Graduate Department Mohendra College, Patiala.
- Chawla took over charge of Post Graduate Department of Mohindra College, Patiala in 1969, and served as Head for about 26 years. Myself took over charge of Post-Graduate Department of Geography, Kurukshetra, in 1968 as Head, and spent 28 years at Kurukshetra University; Chawla and myself remained in regular contact.

After shifting to Patiala in 1996 I used to meet Chawla frequently on morning walk, and occasionally shared break-fast tea at his Civil Lines personal residence on my route; and Parvesh Ji (Chawla's wife) used to serve tea with smiling face.

Request was made to stage secretary on 13.02.2013 at the time of Kirya (Antim Ardas) to pay befitting tribute to departed soul. Unfortunately, could not get opportunity for doing so due to time constraint, even Mangat could not.

This tribute in the memory of Chawla is to fill that gap, as no body could have such a long association in academic circles, as much myself had.

To make this tribute simple and short punctuation, grammar etc. were not cared for. So, my apologies for that to geographers and friends, despite this they will know more about Chawla.

One should have strong will-power, firm self-confidence and positive-attitude toward life.

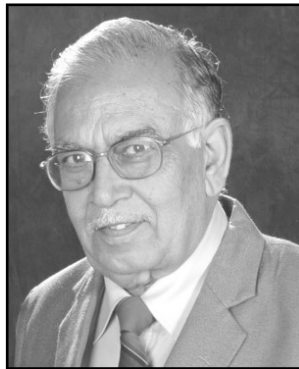
It was evident from our meetings with Chawla on morning walk at 6 C, Civil Lines, Patiala. One evening Mangat, my wife Gajinder and myself met him at his younger son Ravi's official residence, and Sangita (Ravi's wife) served tea. Chawla received us with charming, smiling and bold face, knowing about his death ahead due to advance stage of disease – pitch of his speech was low, with it he whispered to me about it.

Jasbir Singh, Professor Emeritus,

Department of Geography, Kurukshetra University, Kurukshetra.

Tribute

Professor I. N. Chawla was source of inspiration for us. Through this News Letter of which he was founder editor has been encouraging us to work for the cause of geography. He is no more with us but:



- Chawla's fondest and unforgettable memories will always make us smile, and his fragrant smile and presence will be missed forever by us all;
- Till memories fade and life departs, Chawla will remain in our mind and hearts; and
- Pray to Almighty for departed soul's rest, peace and comforts in the heavenly abode: May God take care of Chawla as he did for us all.

EDITOR

1st International Conference of APG

Within few years APG has only not widened its base from Punjab to India, but now it has culminated its glory of organizing geographical activities/events upto the global scale. A part and parcel of APG, Department of Geography, Kurukshetra University, Kurukshetra has taken an initiative to set up a milestone by organizing 1st International Conference of APG on October 4-5, 2013. Two aspects of this conference are very considerable i.e., its international level and its focal theme highlighting disasters phenomenon and sustainable development.

Focal Theme

Disasters, Natural Resource Management and Socio-Economic Development

Sub-Themes

1. Natural and Human Induced Disasters
2. Disaster Management and Planning
3. Ecological Impacts of Disasters, Climate Change Adaptation
4. Social Vulnerability to Disasters, Human Health and Livelihood
5. Disasters, Gender and Poverty
6. Geography and Sustainable Natural Resource Management

7. Natural Resources Planning and Policies
8. Urban, Regional and Environmental Planning
9. Geospatial Technology in Disasters and Natural Resource Management
10. Socio-economic Development and its Spatial Dimensions

Call for Papers: Original research papers are invited for presentation on any of the sub-theme of the conference. Abstract of paper not exceeding 250 words on A4 size with 1.5 space in Times Roman (12 Font) should be sent through email to apginternational1@gmail.com.

For details, please contact: spk34@rediffmail.com

Date- Deadlines

Submission of Abstract: August 10, 2013

Intimation of Acceptance: August 24, 2013

Submission of Full Paper: September 10, 2013

8th State Level Geographical Quiz Contest

Fostering its rich tradition of conducting regularly the exemplary geographical activities, the P.G. Department of Geography, SCD Govt. College, Ludhiana again successfully organized State level Geographical Quiz Contest (2013), under the aegis of Association of Punjab Geographers on 23rd Feb. 2013. A written test was conducted to short list among 11 teams participating this gala event from all the corners of the state. As a result, five teams qualified to participate in the final quiz. SCD Govt. College Ludhiana won first prize, Govt. Mahindra College Patiala won Second prize and Third prize was won by Government College for Girls Ludhiana. As quizmaster Miss Ruhani and Miss Jasleen Kaur students of M.A.- II Geography from the host college acted very well.

Principal of the college congratulated the winners and gave away the prizes. Dr Lakhvir Singh Gill, Gen. Secretary APG and Dr. Dharam Singh Principal Govt. College Tanda Urmar also graced the occasion. Prof. Harbans Singh, Head of Geography Department presented vote of thanks.



Quiz –Contest Prize Winners with Sh. Rajinder Singh principal SCD Govt. College, Prof. Harbans Singh Head, Deptt.of Geography and faculty members.

NEW ARRIVAL

A felicitation volume *“Readings in Population, Environment and Spatial Planning”* published by ISPER in honour of Dr. R. C. Chandna, formerly Professor, Department of Geography, Panjab University, Chandigarh was released on 5th April, 2013. The volume (ISBN 978-81-927014-0-0) comprises of three Parts (i) Population - having 20 research papers; (ii) Environment – 10 research papers and (iii) Spatial Planning – 9 research papers covering 434 pages in addition to front matter (34 pages). The volume has been edited by K.D. Sharma, formerly Professor, Department of Geography, Panjab University, Chandigarh; H.S. Mangat, formerly Professor, Department of Geography, Panjabi University, Patiala and K. Surjit Singh, formerly Chief Town Planner, Haryana and currently Secretary General, ISPER. **It is priced at Rs. 3000/- with a 40% discount to the teachers and the libraries. Thus, it will cost Rs. 1800/ that also includes the cost of delivery.** For others its cost is Rs. 3000/ including postal charges.

The book can be procured from Secretary General, Institute for Spatial Planning and Environment Research, C-1, Amaravati Enclave, Shmila Road, Panchkula, Haryana.

Contact No.: 09215014411

E-Mail: isperonline@gmail.com

14th APG National/ International Conference

Department of Geography of any university/ college willing to host 14th APG Conference may contact Sh. K. Surjit Singh, President, APG. Contact No- 09215014411, E-Mail- isperonline@gmail.com

Conference/Seminar:

35th NAGI is being hosted by the Department of Geography, University of Madras, Chennai on December 12-14, 2013. For details connect Dr. R Jaganathan nagiconference2013@gmail.com

Dr. Saminderjeet Singh Young Geographer Award – 2013

Young geographers who have not attained the age of 33 years are invited to send three copies of their original research paper along with bio- data to Dr. B.R. Thakur, Assistant Professor, Department of Geography, H.P. University, Shimla, E-Mail- brthakur53@gmail.com Ph. – 09418065518 to compete for the above mentioned award. The last date for submission of paper is **September 10, 2013**. The name of the author and department should be mentioned in the covering letter and not on the paper to keep secrecy.

News from the Members

Dr. Sarina Kalia, Department of Geography, University of Rajasthan, Jaipur has joined as Associate Professor.

Prof. Anupreet Singh Tiwana, Head, Department of Geography, Mata Gujri College, Fatehgarh Sahib presented his paper, "Ecological Farming in Turkey and India: Issues and the Way Forward" on 3rd International Geography Symposium held at Antalya, Turkey. 724 delegates from 54 countries participated in this four days international event. He also chaired a technical session during GEOMED 2013. He has also edited a book "Declining Sex Ratio – Explorations In Geography of Gender".

National/ International Geographic News

Nature warned us before a 'Himalayan Tsunami'

Nature is never cruel. It always gives and takes

Condolence Resolution

Association of Punjab Geographers deeply mourns the sad demise of Sh. R. C. Aggarwal, President, Institute for Spatial Planning and Environment Research, Panchkula, who left us for his heavenly abode on April 23, 2013. By his departure the Association of Punjab Geographers has lost a dedicated supporter and well-wisher of APG working for the cause of Geography.

The APG sends its heart felt condolences to the bereaved family and prays to the God for peace of departed Soul and to provide strength to the family to bear the irreparable loss.

everything with its open hands. In August 2012, buildings were washed away by Uttarkashi flash floods. Later, a cloudburst in Rudraprayag had claimed 69 lives. It was a loud alarm but who did bother for it? It happened again on June 15 and 16, 2013 when the region received over 340 mm of rainfall, i.e., 375 per cent above normal. The resultant 'Himalayan Tsunami' flattened everything that came in its way. Whether it is natural or man framed calamity, a controversial question is on the wall. The administration insists that it was a natural calamity; ecologists hold that this was a man-made disaster waiting to happen. In this fragile Himalayan belt, the rampant and unplanned construction of buildings and houses along the banks of the rivers, construction of dams, regulators have always disturbed natural flow of water in the name of progress. Geographically, the major cause of the unprecedented devastation was the crumbling of the Kedar Dome, a glacier-like body of rock and ice. Breaking of this enormous 'glacier' followed by cloudburst and eventual landslides caused a major rupture in the Charbari Lake situated just 5 km from the holy temple of Kedarnath, situated at an altitude of 3600 mt. At the name of development, man always disturbs the nature and its beauty, when the nature reacts we blame it for creating disasters. We must not wait for tomorrow to learn the lesson.

Printed Matter Book - Post

To,

Principal Shubhprem Singh Brar
480, Model Town,
Bathinda-151001 (Punjab)
Email : premshub@yahoo.co.in

Stamp